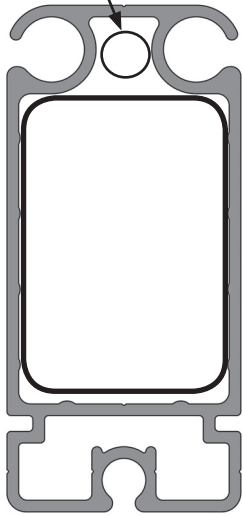


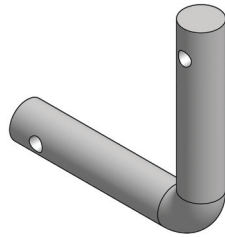
Navi-Trac Ground Bar Keeper Instructions

Upright prong fits into this part of upright.

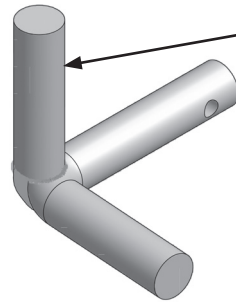
This end to outside of tent.



Cross sectional view of upright.



Groundbar keeper for intermediate upright.

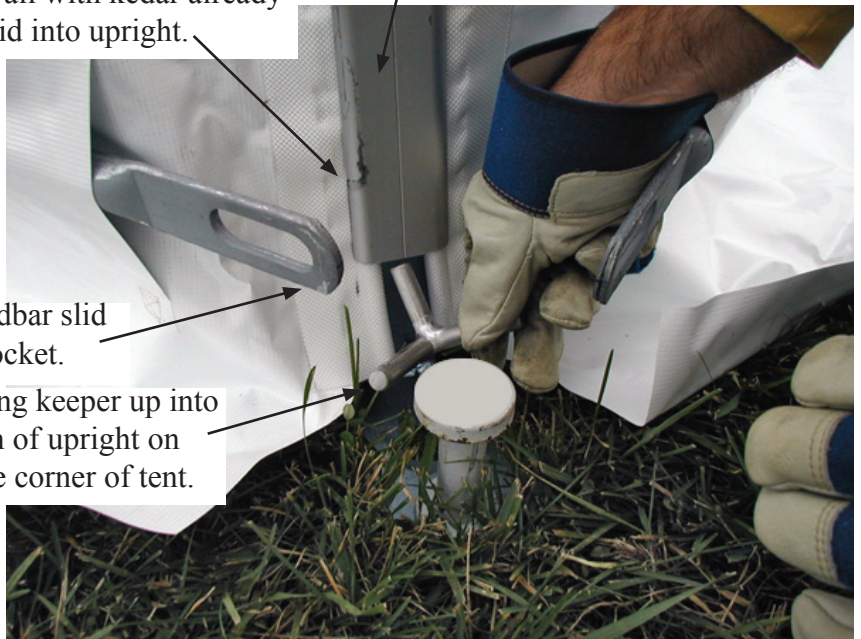


Prong with no hole inserts up into upright.

Groundbar keeper for Corners.

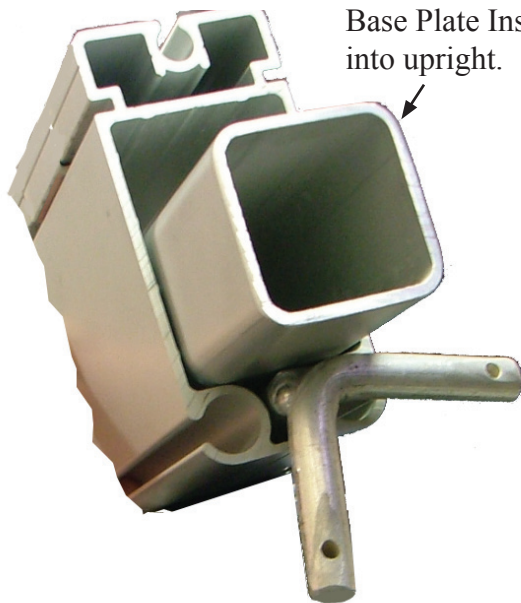
Wall with kedar already slid into upright.

Corner Upright



Groundbar slid into pocket.

Inserting keeper up into bottom of upright on outside corner of tent.



Base Plate Inserted into upright.

Bottom View looking up into upright with Groundbar keeper inserted.

Slide groundbars onto prongs and pin into place as shown.

