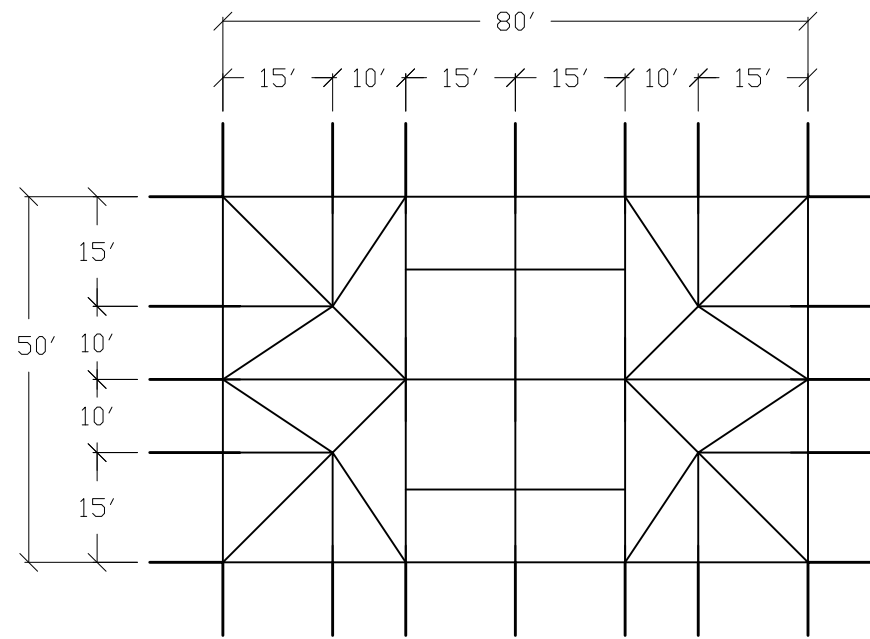
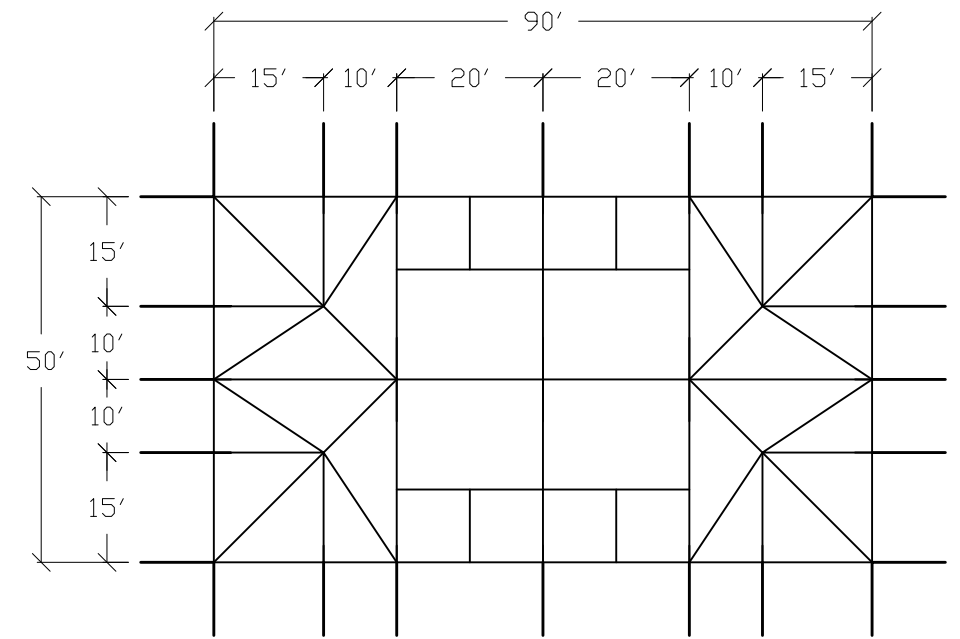


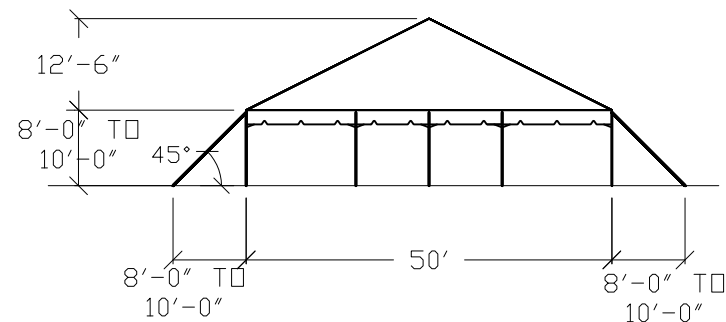
PLAN
HIP ENDS WITH 10'
MID BAYS



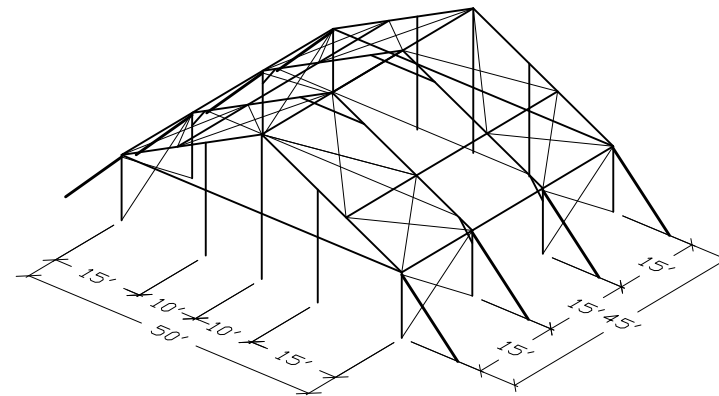
PLAN
HIP ENDS WITH
15' MID BAYS



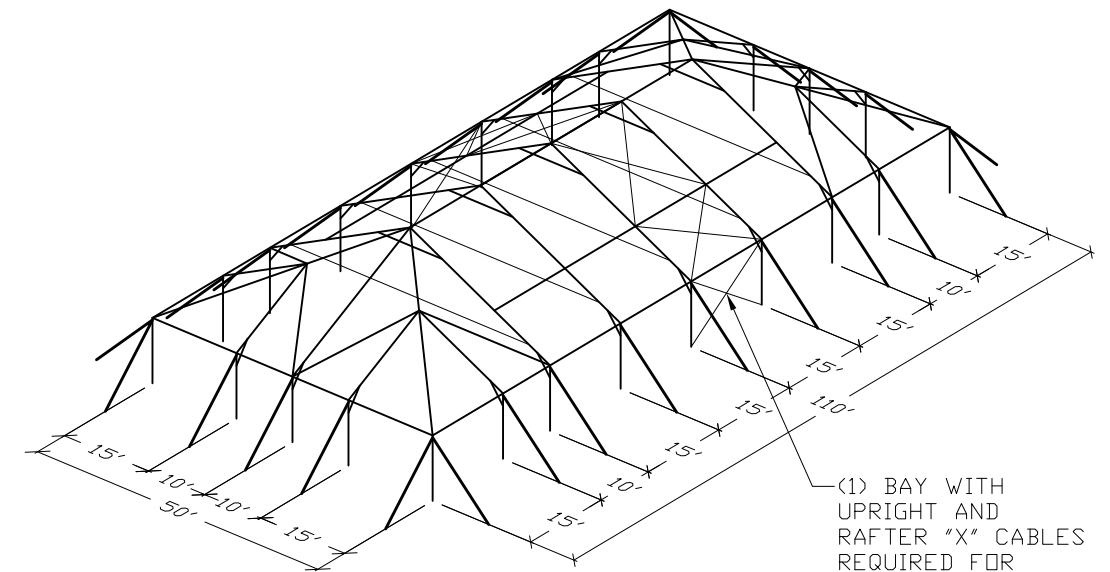
PLAN
HIP ENDS WITH
20' MID BAYS



END ELEVATION

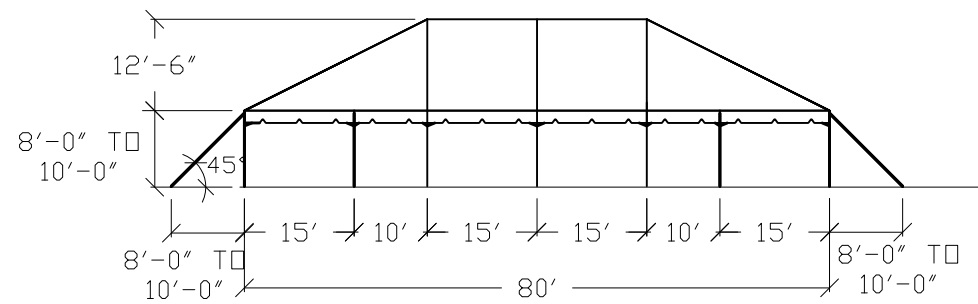


3-D VIEW
GABLE ENDS WITH
(3) 15' MID BAYS



3-D VIEW
HIP ENDS WITH
(4) 15' MID BAYS

(1) BAY WITH UPRIGHT AND RAFTER "X" CABLES REQUIRED FOR STRUCTURE EVERY 100' OF LENGTH.



SIDE ELEVATION
(WITH 15'-0" MID BAYS SHOWN)

REVISIONS			ANCHOR INDUSTRIES INC.		
EC/PR NO	DATE	BY	BROCHURE DRAWING 50' WIDE NAVI-TRAC FRAME TENT		
1	02-06-07	DMK	DRAWN BY: DMK		
2	04-03-07	DMK			
APPROVED BY:			CHECKED BY:	DRAWING NO.	
			EC/PR NO.	DATE:	06-253-4-3
				08-22-06	